

Sonoma County Department of Health Services Groundwater Contamination Response Plan

CCDEH Excellence in Environmental Health Presentation

*September 23, 2008
Walt Kruse & Christine Sosko*



Sonoma County

Wineries, Coastline and Beaches, Rivers, Redwoods, Golf courses, Race Courses, Drag Strips, Spas, Museums, Shopping, Galleries, Festivals, Farmer's Markets, Dairies, and Eateries

- *Estimated Population of 481,000*
- *Approximately 40,000 wells*
- *42% of the population supported in part by groundwater*



Historical Perspective

- *1998 – PCE contamination was detected at West College Avenue*
- *2000 – North Coast Regional Water Quality Control Board issued a Prop. 65 Notice*
- *2001 – Community organization formed, requesting information and future assurances*
- *2002 – Environmental Risk/Community Outreach position was created and hired within the Environmental Health Division*



Groundwater Contamination Response Plan

*August 19, 2003, the Board of Supervisors
authorized the Sonoma County Department of
Health Services, Environmental Health Division
to implement a Groundwater Contamination
Response Plan (Plan)*



California Government Code, Section 54950

“The people of the State do not yield their sovereignty to the agencies which serve them. The people, in delegating authority, do not give their public servants the right to decide what is good for the people to know and what is not good for them to know. The people insist on remaining informed so that they may retain control over the instruments they have created.”



Precautionary Principle

*Wingspread Conference
Racine, Wisconsin, January 1998*

“When an activity raises threats of harm to human health or the environment, precautionary measures should be taken even if some cause and effect relationships are not fully established scientifically.”

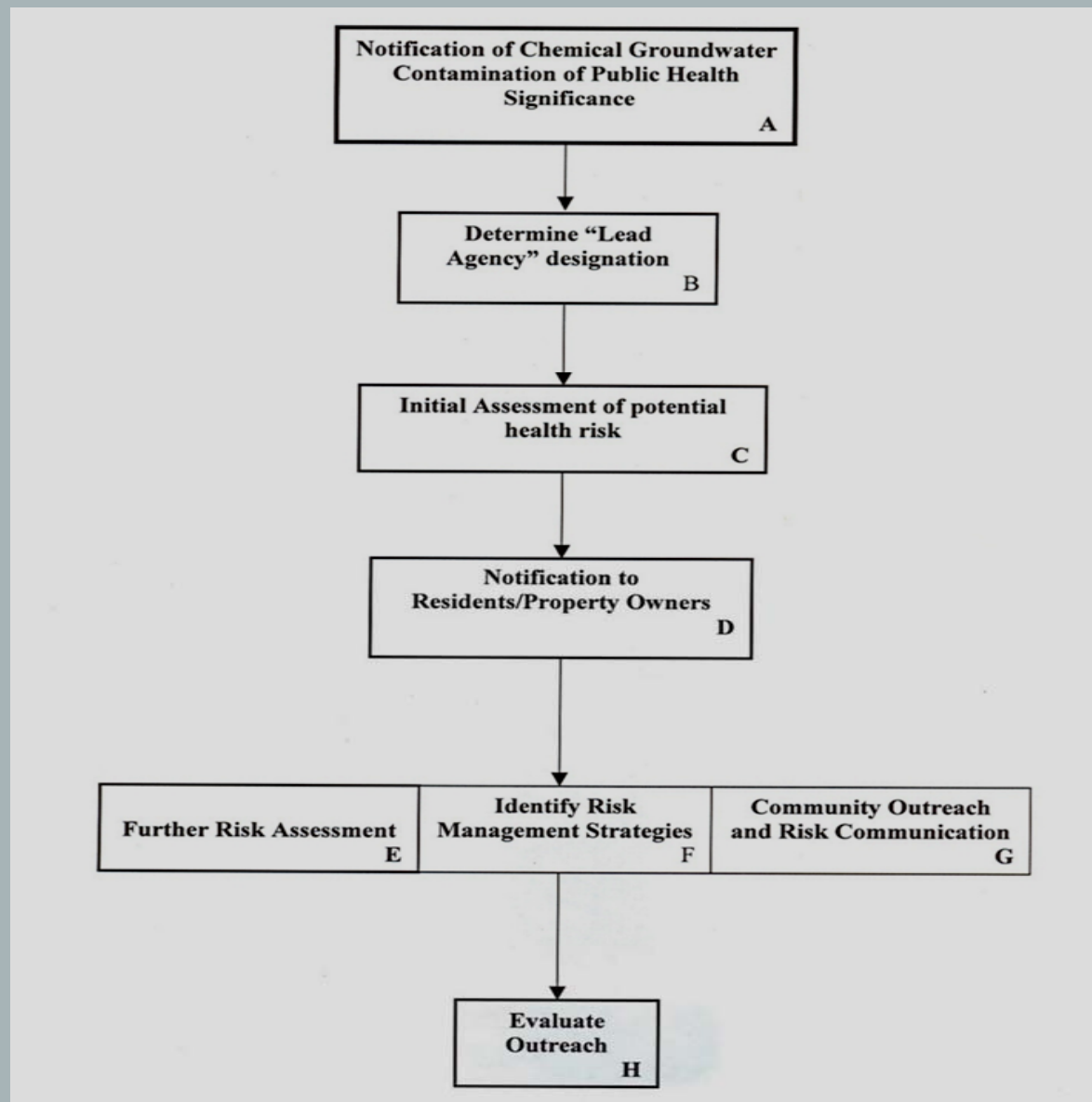


Plan Purpose

- *Notify citizens when man-made or natural chemicals are found in groundwater which could potentially affect the health of individuals or communities*
- *Provide chemical and health information to public*
- *Educate the public on risk reduction strategies for a safe drinking water supply*
- *Respond to the needs of potentially affected individuals and communities*



The Plan Matrix

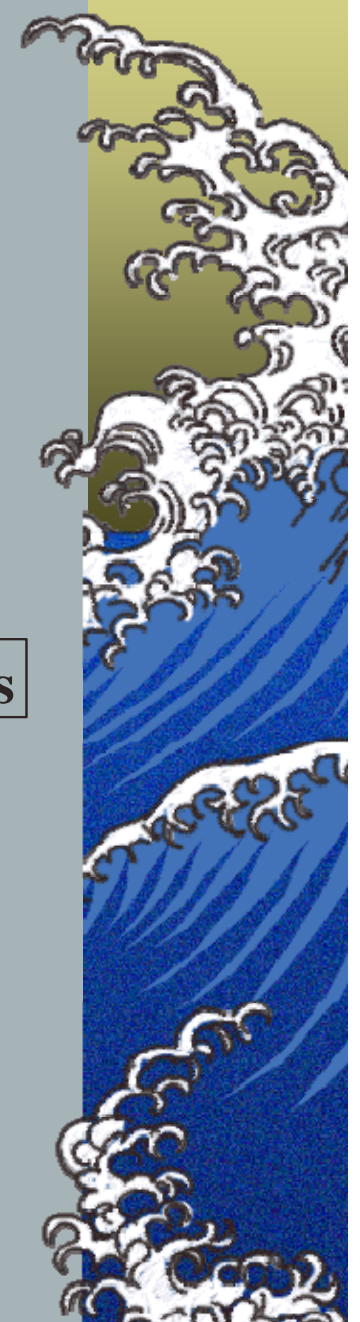
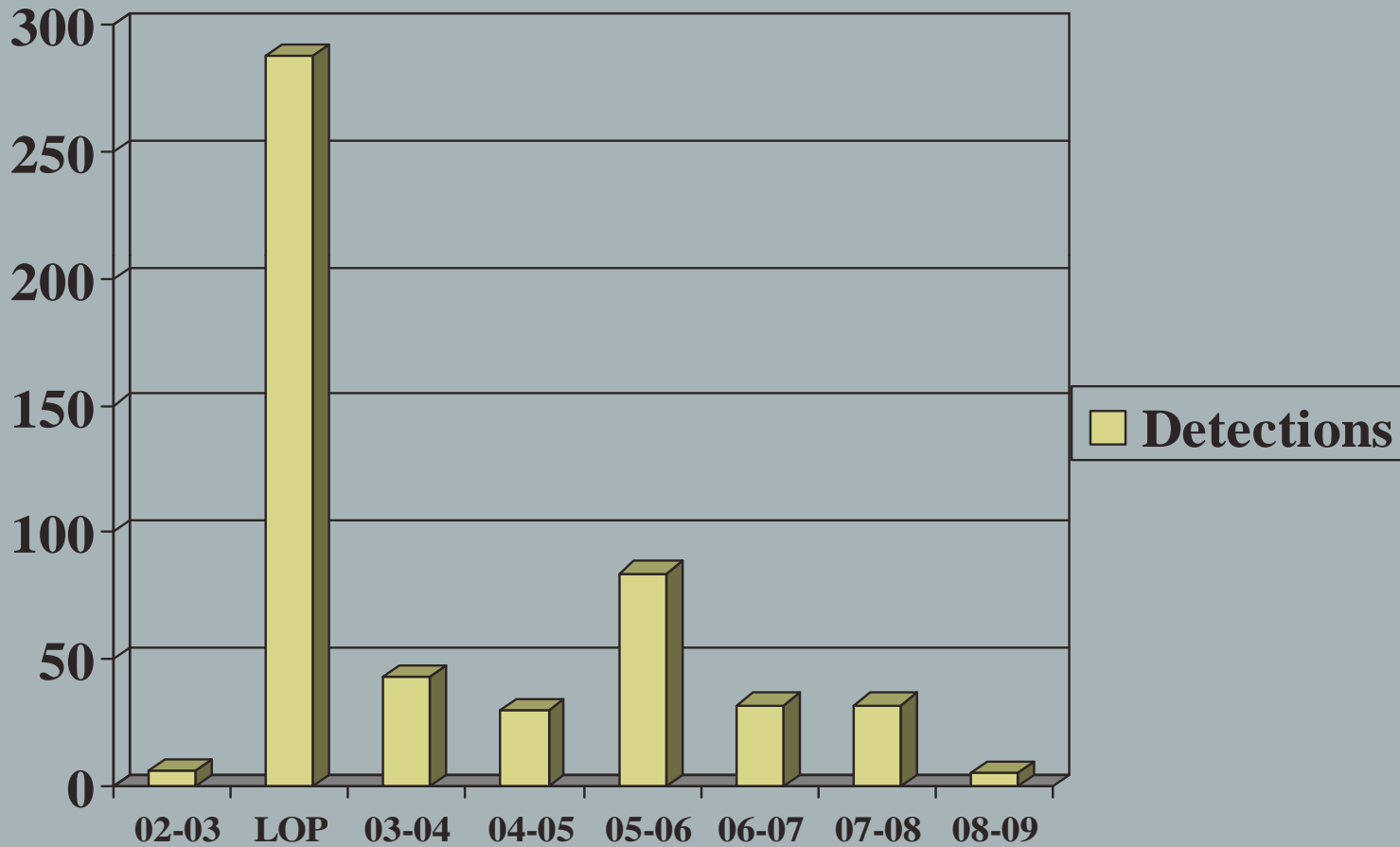


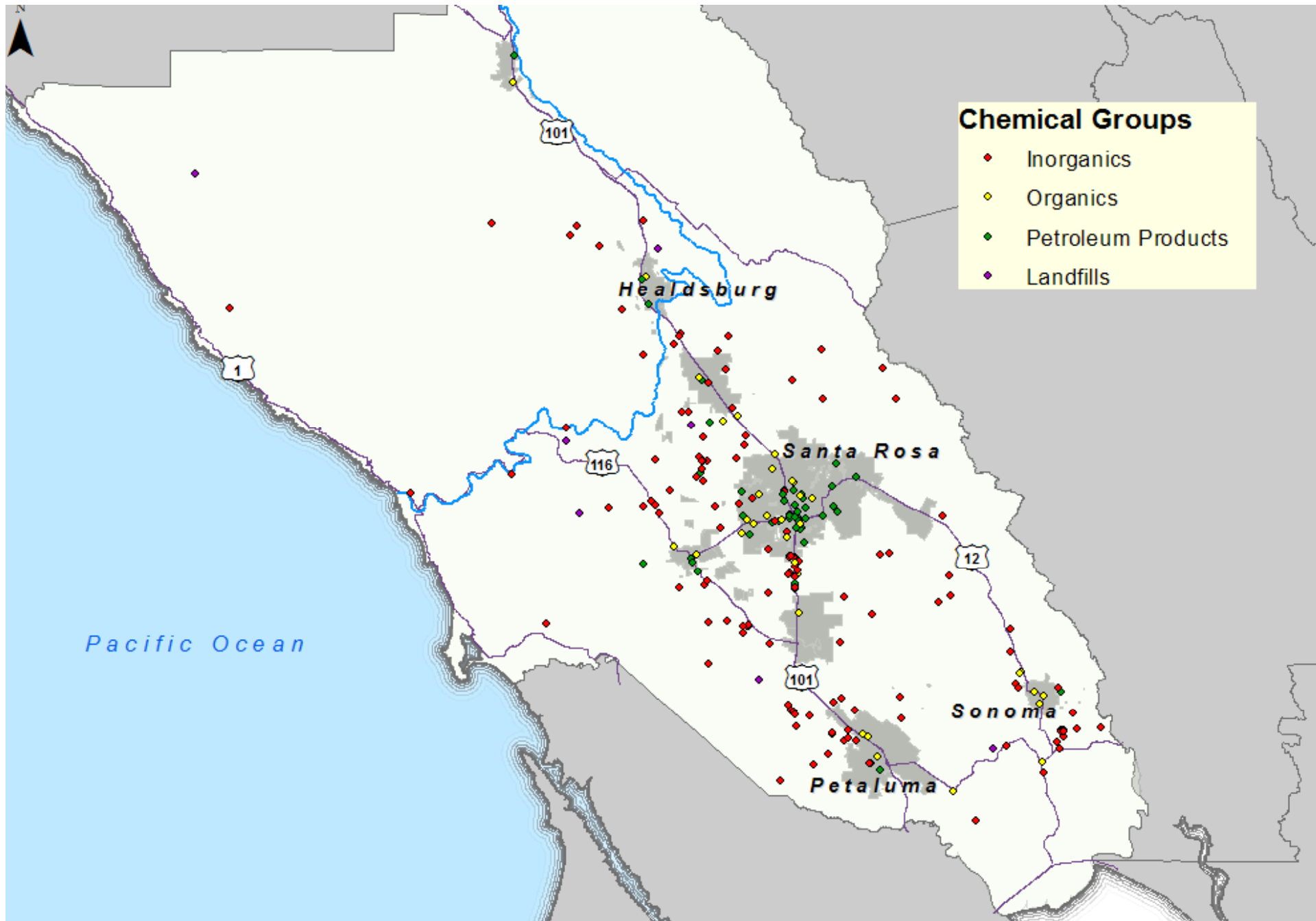
Plan Results

- *Reduction of potential health risk*
- *Fostering public trust in government*
- *Improving inter-agency cooperation*
- *Empowering citizens with information*
- *Encouraging citizen responsibility*
- *Facilitating collaborative and effective responses*



Annual Detections

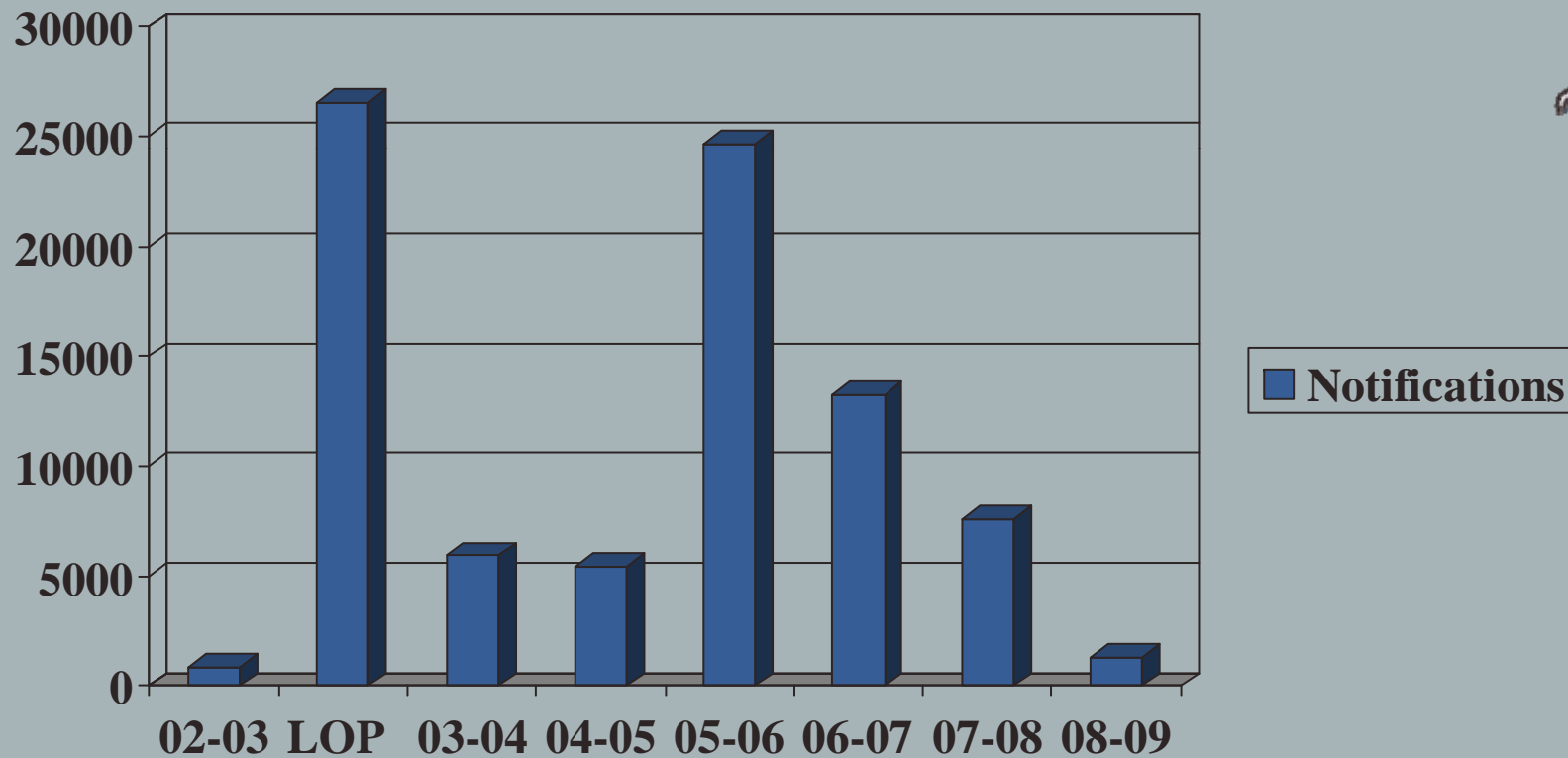


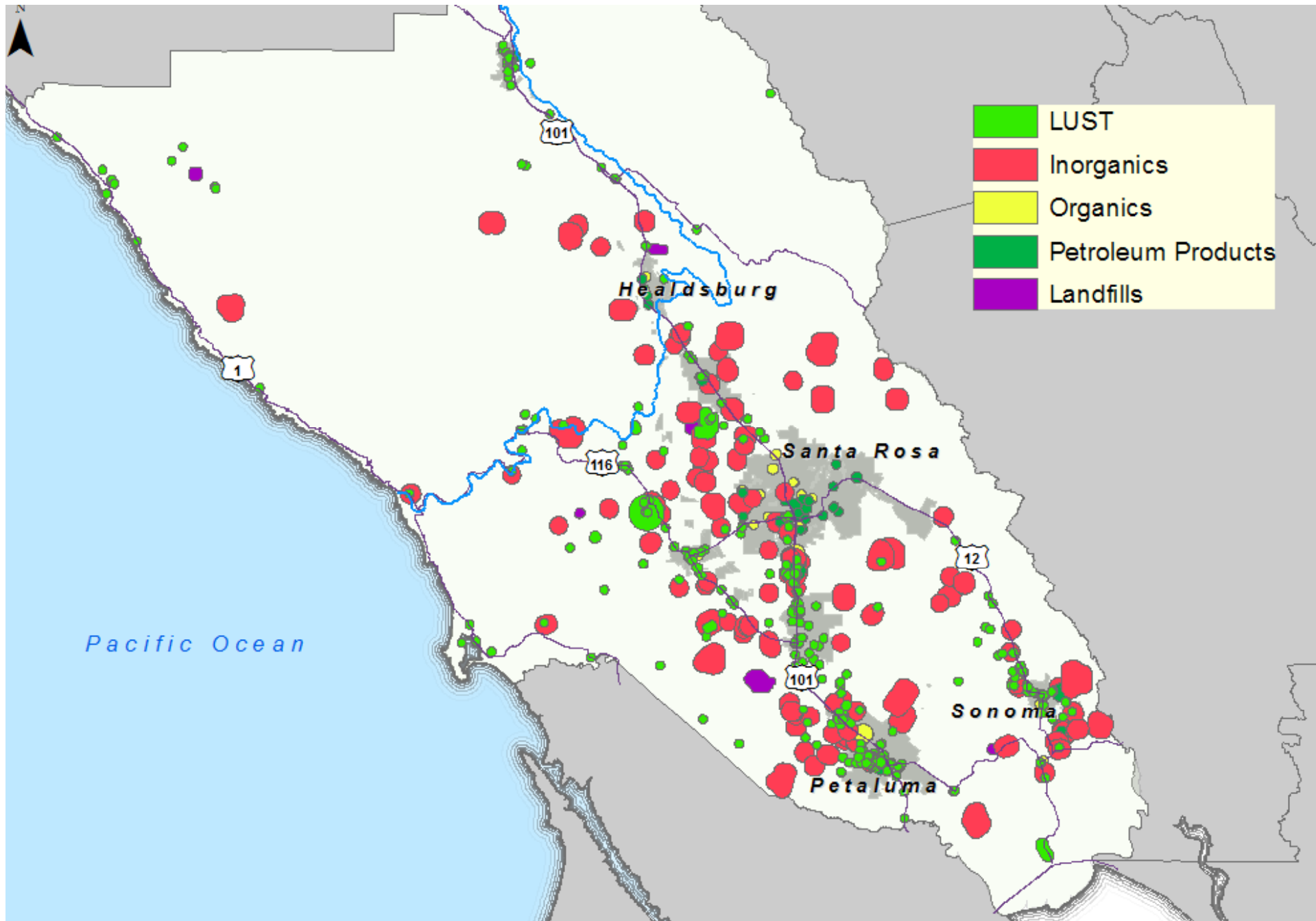


Chemical Groups

- ◆ Inorganics
- ◆ Organics
- ◆ Petroleum Products
- ◆ Landfills

Annual Notifications





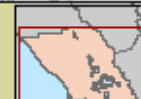
Author: Darryl Bering
 Sonoma County
 Department of Health Services

GROUNDWATER NOTIFICATIONS
AUGUST 19, 2003 TO JUNE 30, 2008

Disclaimer: The spatial boundaries depicted in this application are intended as a visual aid only. Official record of survey always take precedence.

Neither the County of Sonoma, and the Environmental Health Division nor any of their employees make any warranty, express or

No part of this data may be copied, reproduced, or transmitted in any form or by any means without written permission.



1:10,000

Implementation Results

- *Created educational materials*
- *Facilitated an environmental risk seminar for medical providers in collaboration with CDC, EPA, and other federal and state agencies*
- *Conducted community meetings and door-to-door outreach*
- *Implemented a GIS Mapping System to track detections and notification areas*



Contact Information

Sonoma County

*Department of Health Services
Environmental Health Division*

475 Aviation Blvd., Suite 220

Santa Rosa, CA 95403

(707) 565-6565

*[http://www.sonoma-county.org/
health/eh/water_quality.htm](http://www.sonoma-county.org/health/eh/water_quality.htm)*

Christine Sosko: csosko@sonoma-county.org

